

# Christopher Hodgson

ESTATE AGENTS . AUCTIONEERS & VALUERS



## Whitstable

To Let £1,100 PCM

...for Coastal, Country & City living.



• 95/97 Tankerton Road . Whitstable . Kent CT5 2AJ . t: 01227 266441 . f: 01227 266443  
e: sales@christopherhodgson.co.uk, lettings@christopherhodgson.co.uk . [www.christopherhodgson.co.uk](http://www.christopherhodgson.co.uk)

Estate agency services are provided by Christopher Hodgson Limited, a company incorporated and registered in England and Wales with the number 07108955 whose registered office address is at Camburgh House, 27 New Dover Road, Canterbury, Kent CT1 3DN. Lettings and valuations are provided by Christopher Hodgson and Helen Hodgson trading as Christopher Hodgson.

# Whitstable

## Apartment 6, Carlton Court The Bridge Approach, Whitstable, Kent, CT5 1FL

A spacious top floor apartment in a prestigious landmark building, ideally positioned moments from Whitstable station, Tankerton seafront (0.6 of a mile distant) and Whitstable's bustling High Street, which is less than a mile distant and offers a wide variety of independent shops and highly regarded restaurants.

The accommodation has been finished to a high specification in contemporary style and is arranged to provide an entrance hall, living room open-plan to a smartly fitted kitchen with integrated appliances and opening to a balcony with spectacular views over the town and to the sea, two double bedrooms and a sleek modern bathroom.

The apartment benefits from one allocated parking space in a secure gated car park.

No pets or smokers. Available from early June.



### Location

The Bridge approach is conveniently situated on the Whitstable/Tankerton borders being accessible to either Tankerton or the fashionable town centre of Whitstable where a range of shops, schools, and recreational facilities can be found including a working harbour. Tankerton enjoys a well regarded range of amenities including shops, schools and bus routes as well as Tankerton slopes and its popular beach. Whitstable mainline railway station provides fast and frequent link to London (Victoria approximately 80mins) with high speed links to London St Pancras (approximately 73minutes) and the A299 is also easily accessible linking with the A2/ M2 providing access to the channel ports and subsequent motorway network.

### Accommodation:

The accommodation and approximate measurements are:

#### • Entrance Hall

#### • Living Room/Kitchen

23'9" x 17'5" (7.24m x 5.31m)  
at maximum points.

#### • Bedroom 1

12'11" x 8'3" (3.94m x 2.51m)

#### • Bedroom 2

11'4" x 9'9" (3.45m x 2.97m)  
at maximum points.

#### • Bathroom

8'3" x 5'5" (2.51m x 1.65m)  
at maximum points.

#### • Balcony

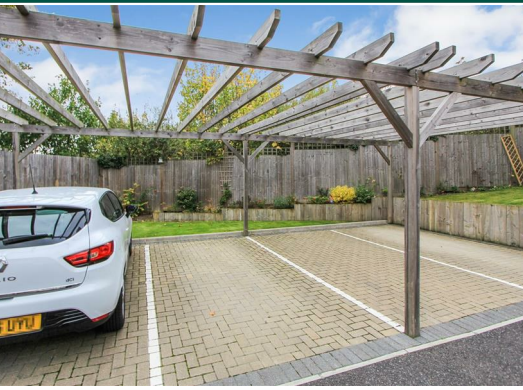
10'4" x 6'4" (3.15m x 1.93m)  
at maximum points.

#### Holding Deposit

£253 (or equivalent to 1 weeks rent)

#### Tenancy Deposit

£1,269 (or equivalent to 5 weeks rent)



### Tenancy Information

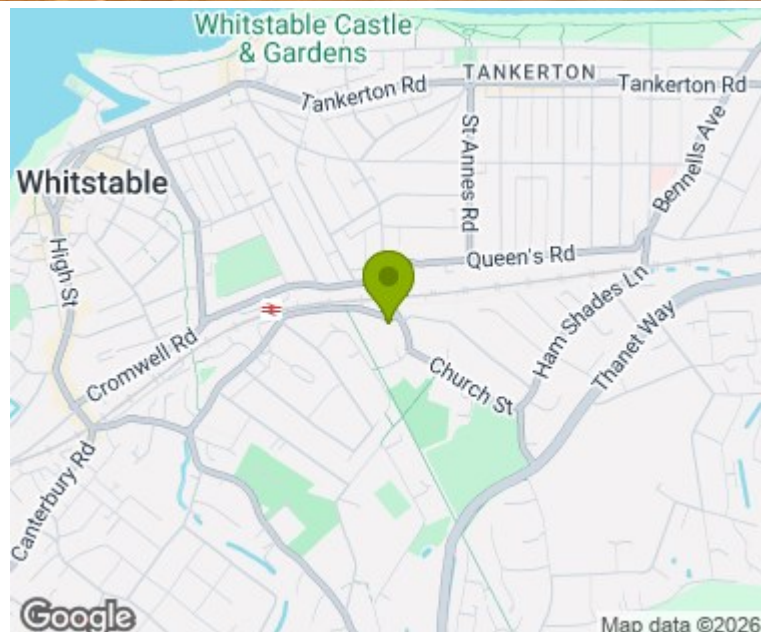
For full details of the costs associated with renting a property through Christopher Hodgson Estate Agents, please visit our website [www.christopherhodgson.co.uk/Tenants](http://www.christopherhodgson.co.uk/Tenants)

### Client Money Protection

Provided by ARLA

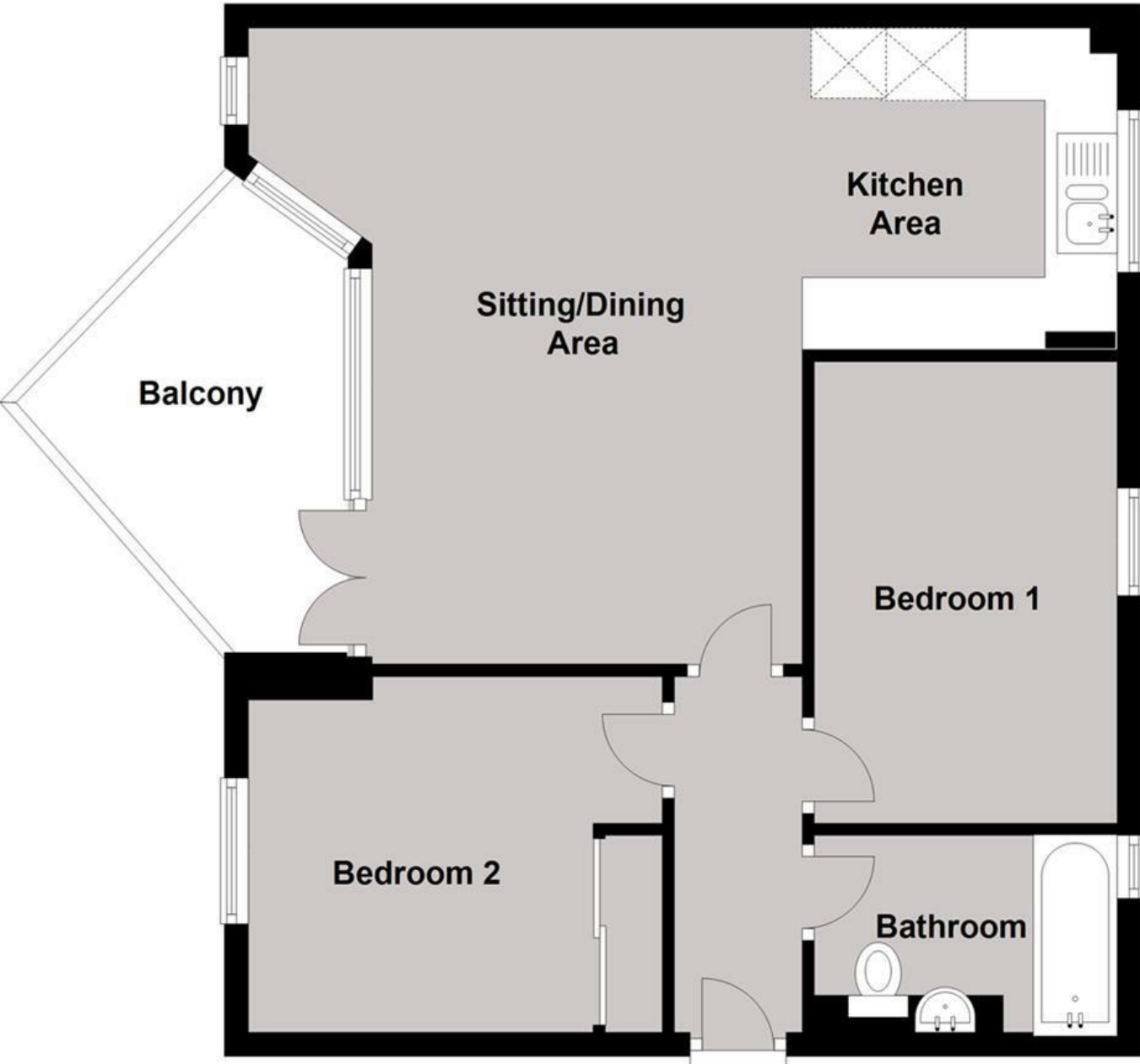
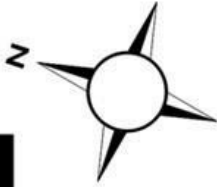
### Independent Redress Scheme

Christopher Hodgson Estate Agents are members of The Property Ombudsman



# Top Floor

Approx. 56.7 sq. metres (610.4 sq. feet)



Total area: approx. 56.7 sq. metres (610.4 sq. feet)

Council Tax Band C. The amount payable under tax band C for the year 2023/2024 is £1,864.53

Viewing: STRICTLY BY APPOINTMENT WITH AGENTS . t: 01227 266441

Christopher Hodgson Estate Agents for itself and as for the vendor or lessor (as appropriate) gives notice that: 1 These particulars are only a general outline for the guidance of intending purchasers or lessees and do not constitute in whole or in part an offer or a Contract. 2 Reasonable endeavours have been made to ensure that the information given in these particulars is materially correct but any intending purchaser or lessee should satisfy themselves by inspection, searches, enquiries and survey as to the correctness of each statement. 3 All statements in these particulars are made without responsibility on the part of Christopher Hodgson Estate Agents or the vendor or lessor. 4 No statement in these particulars is to be relied upon as a statement or representation of fact. 5 Neither Christopher Hodgson Estate Agents nor anyone in its employment or acting on its behalf has authority to make any representation or warranty in relation to this property. 6 Nothing in these particulars shall be deemed to be a statement that the property is in good repair or condition or otherwise nor that any services or facilities are in good working order. 7 Photographs may show only certain parts and aspects of the property at the time when the photographs were taken and you should rely upon actual inspection. 8 No assumption should be made in respect of parts of the property not shown in photographs. 9 Any areas, measurements or distances are only approximate. 10 Any reference to alterations or use is not intended to be a statement that any necessary planning, building regulation, listed building or any other consent has been obtained. 11 Amounts quoted are exclusive of VAT if applicable. 12 Whilst reasonable endeavours have been made to ensure the accuracy of any floor plan contained in these particulars, all measurements and areas are approximate and no responsibility is taken for any error, omission or mis-statement. This plan is for illustrative purposes only and should be used as such by any prospective purchaser. 13 Any mapping contained within these particulars is for illustrative purposes only and should be used as such by any prospective purchaser. No responsibility is taken for any error, omission or mis-statement. 14 Any computer generated images contained within these particulars are for illustrative purposes only and should be used as such by any prospective purchaser.